



– RELIABLE  
WOOD  
CHIPPING

# TP 100 PTO TP 100 MOBILE TECH SHEET

TP 100 PTO/ MOBILE is a robust drum woodchipper

Equipped with manual coupling (MOBILE)  
chipper with funnel 25° from level

Equipped with two reversible blades  
and 1 reversible counter steel

E-Start (MOBILE)

Petrol engine, tank capacity 8,5l (MOBILE)

DESIGNED

MANUFACTURED

DENMARK

# TP 100 PTO

EFFECTIVE BREAK DOWN OF GREEN MATERIALS

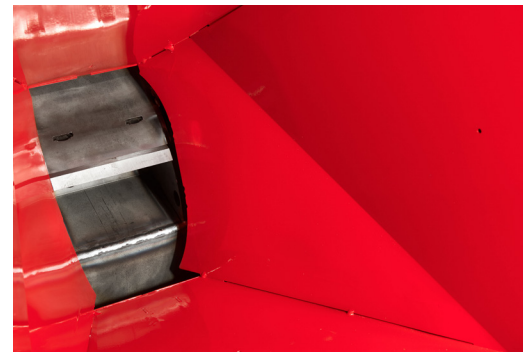


- Ideal for use in confined spaces and where tractor power is below 40 HP
- Rotatable ejector spout
- Reversible knives
- Speed-up gear
- Optional extension arms for 3-point suspension

## EFFICIENT DRUM CHIPPER – PERFECT FOR COMPACT TRACTORS

Thanks to the vertical funnel, TP 100 PTO is a compact wood chipper, which does not take up much space. At the same time, the design provides efficient in-feed without the use of rollers. The machine is ideal for thinning bushes and for chipping branches and smaller trees, e.g. in parks, on housing association grounds, churchyards and golf courses.

- Category 1 three-point-linkage for tractor mounting
- Turnable discharge spout
- PTO axle with free wheeling





# TP 100 MOBILE

EFFECTIVE BREAK DOWN OF GREEN MATERIALS



■ 2 in 1 ADJUSTABLE BASE AND DRAWBAR

## PARTICULARLY USEFUL IN CONFINED SPACES

The TP 100 MOBILE is a compact machine that does not take up much space. Width 74 cm. The construction also enables a strong in feed without the use of feed rollers.

■ 2 in 1 ADJUSTABLE BASE

■ MOVER COMES AS A OPTION

■ ADJUSTABLE HANDGRIB



## VANGUAARD EFI 18 HP

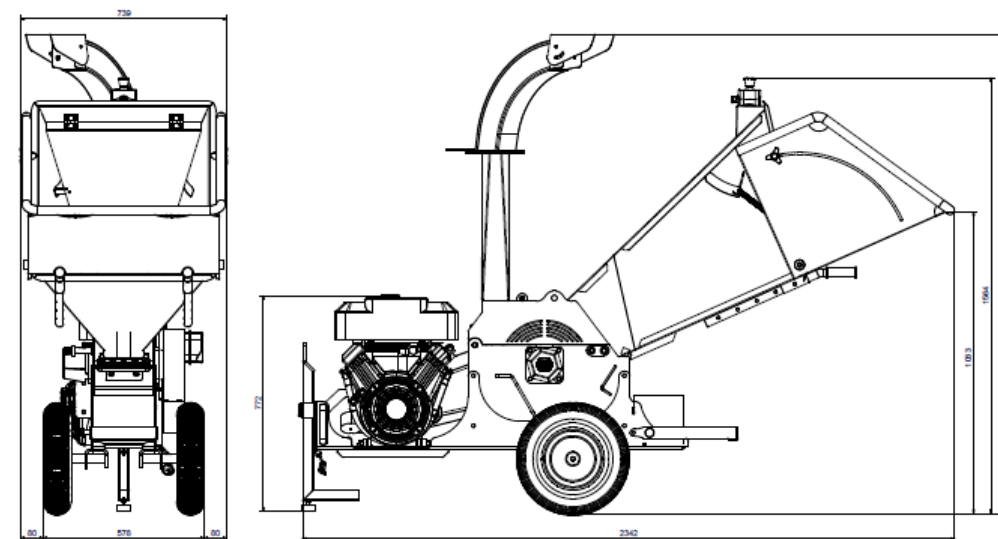
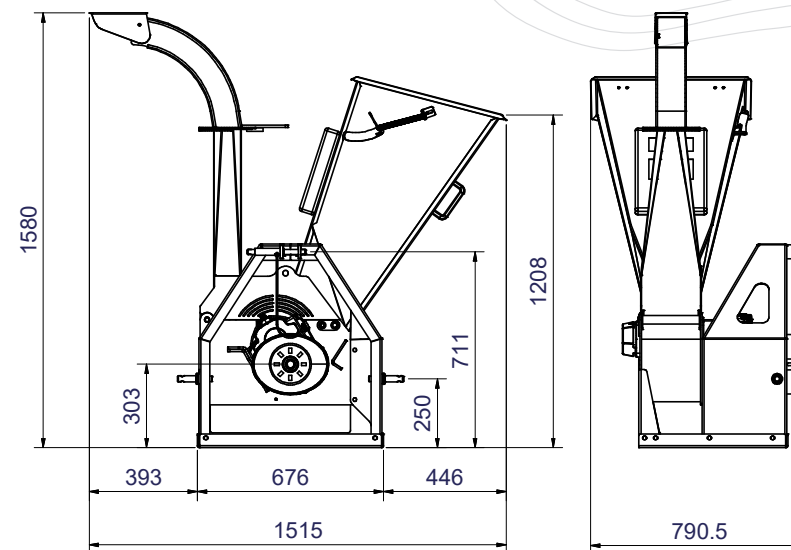
- 2 cylinder air-cooled petrol engine with electronic ignition system
- Low consumption
- Cheap to maintain
- Large petrol tank 8,5 litres
- E-Start comes as standard



# TP 100 PTO/MOBILE

## TECHNICAL DATA

WOODCHIPPER	TP 100 PTO	TP 100 MOBILE
Max. wood diameter	100 mm	100 mm
Infeed opening	H x W = 150 x 275 mm	H x W = 150 x 275 mm
Chipping principle	Drum	Drum
In feed angle	Parallel to driving direction	Parallel to driving direction
Feed rollers	No	No
Drum diameter	410 mm	410 mm
Drum weight	48 kg	48 kg
Number of knives	2 (reversible)	2 (reversible)
Counter steel	1 (reversible)	2 (reversible)
Power requirment min.-max.	15 - 40 hp	-
Engine power	-	18 hp / 13 kW
Torque	-	35 Nm
Engine	-	B&S Vanguard
cylindre	-	2
Tankcapacity	-	8,5 liter (petrol)
fuelconsumption	-	3l/t
capacity/hour	7 m³/h	3 m³/h
Weight	195 kg	240 kg
Height	1580 mm	1719 mm
Wide	1515 mm	740 mm
Length	791 mm	2345 mm



## LINDDANA A/S

Linddana A/S  
Ølholm Bygade 70  
DK-7160 Tørring

T +45 75 80 52 00  
tp@linddana.com  
www.linddana.com